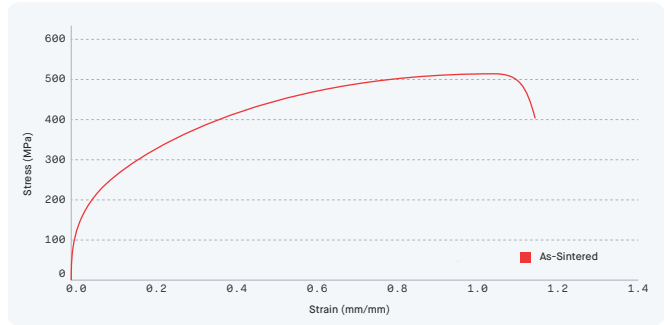


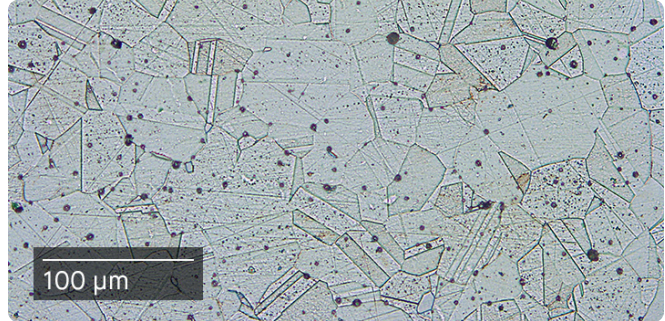
[Material Data Sheet]

316L Stainless Steel



COMPOSITION %

Fe	Balance
C	0.03 (max)
Cr	16.0 - 18.0
Ni	10.0 - 14.0
Mo	2.0 - 3.0
Mn	2.0 (max)
Si	1.0 (max)



MECHANICAL PROPERTIES

	Standard	Production System™	ASTM B883 / MPIF 35
		As-Sintered	As-Sintered
Ultimate tensile strength ¹ (MPa)	ASTM E8	510 ± 7	450-520
Yield strength ¹ (MPa)	ASTM E8	155 ± 5	140-175
Elongation at break (%)	ASTM E8	75.3 ± 4.0	40-50
Young's modulus ² (GPa)	ASTM E8	-	-
Hardness (HRB)	ASTM E18	65.8 ± 1.0	67
Density	g/cm ³	7.9	7.6
Surface finish ³ (µm Ra)	ISO 4287	3 - 8	-

ATTRIBUTES & APPLICATIONS

- Corrosion resistant
- Medical components for use in endoscopy & orthopedics
- Structural components (e.g. housings & frames)
- Jewelry & decorative items
- Fluid transfer components (e.g. manifolds)

OTHER STANDARD DESIGNATIONS

- UNS S31673
- EN 1.4404

1. YS & UTS properties noted represent mean values across Xy & Yx orientations.
 2. Modulus available upon request.
 3. Surface roughness measured in Z direction after sintering & sand blasting.

RIVENDITORE AUTORIZZATO

EnergyGroup
3D Printing Solutions for Industry

a SolidWorld Group company
 BOLOGNA - TREVISO - MILANO - ANCONA
 info line 051 864519
 www.energygroup.it

Technimold
Industrial Additive Manufacturing

a SolidWorld Group company
 GENOVA
 info line 010 6018463
 www.technimoldsystemi.com

CAD Manager
Additive Manufacturing Solutions

a SolidWorld Group company
 FIRENZE
 info line 055 8071974
 www.cadmanager.it